



Learning together in faith

**Holy Cross Catholic
Multi Academy Company**

**Child Protection and Safeguarding
Policy
St. Elizabeth's Catholic Primary School**

Responsible for Policy	Marina Kelly
Committee/Board Approval Date	September 2024
Further Action (track progress)	
Posted on Website	September 2024
Sent out to Schools	July 2024
Date of Policy Review	July 2025

Child Protection and Safeguarding Policy

St. Elizabeth's Catholic Primary

September 2024

Policy last reviewed: July 2024

Reviewed by: Marina Kelly

Agreed by: MAC Board 11 September 2024

Shared with LGB: 2nd October 2024

Shared with staff: 2nd September 2024

Frequency of review: Annually

Date of next review: July 2025

Head Teacher/Principal: Michael Doyle

Designated Safeguarding Lead: Julie Miles, Assistant Head Teacher

Deputy Designated Safeguarding Lead: Michael Doyle, Head Teacher

Named Governor for Safeguarding: Ann Harkin

MAC Chair of Board of Directors: John Teahan

Chair of Governors: Ann Harkin (a.harkin1@ntlworld.com)

Vice Chair of Governors: Maria Burton (mariaburton26@hotmail.co.uk)

Designated Lead for Looked After and Previously Looked-After Children: Julie Miles

Early Help Assessment Co-ordinator: Jupinder Kooner

(jupinder.kooner@coventry.gov.uk)

Local Authority designated officer: Nina Farrimond Lado@coventry.gov.uk

Safeguarding in Education Adviser: Charlotte Hegarty charlotte.hegaty@coventry.gov.uk

MASH: MASH@coventry.gov.uk or 024-76788555

MASH Education Representative: Claire McElroy claire.mcelroy@coventry.gov.uk

Prevent: Prevent@coventry.gov.uk

Emergency Duty Team: 024 7683 2222

Table of Contents

1. Definitions	1
2. Introduction	1
3. Roles and Responsibilities	3
4. Types of abuse.....	8
5. Responding to signs of abuse	14
6. Record-keeping.....	22
7. Photography and Images	23
8. Early Help Assessment	23
9. Staff training	24
10. Safer Recruitment	24
11. Allegations of abuse against staff.....	25
12. Promoting safeguarding and welfare in the curriculum.....	28
13. Children Looked After.....	29
14. Children with Special Educational Needs and Disabilities (SEND) or physical health needs	29
15. Use of reasonable force	30
16. Work Experience/ Alternative Provision	30
17. Children staying with host families (see Annex D KCSIE).....	31
18. Boarding schools and residential settings	31
19. Summary.....	31
Appendix A.....	32
Appendix B – Further Safeguarding Information	34

1. Definitions

1.1 'Safeguarding' is defined in **Keeping Children Safe in Education (2024)** as;

- Providing help and support to meet the needs of children as soon as problems emerge
- protecting children from maltreatment;
- preventing the impairment of children's mental and physical health or development;
- ensuring that children grow up in circumstances consistent with the provision of safe and effective care; and
- taking action to enable all children to have the best outcomes.

1.2 'Child Protection' is the intervention that occurs when children have been significantly harmed or are at risk of significant harm.

1.3 'Child' refers to everyone under the age of 18.

1.4 'Parent' refers to birth parents and other adults in a parenting role for example adoptive parents, stepparents and foster carers.

1.5 'Staff' or 'members of staff' refers to all teaching, non-teaching, support, supply, peripatetic, contract staff, governors, volunteers and trustees working in or on behalf of St. Elizabeth's.

1.6 Within this policy, we use the term 'victim', although it is recognised that not everyone considers themselves to be a victim or would want to be described in this way. We also recognise the importance of not using the terminology of 'perpetrator' in relation to children in cases where the behaviour can be harmful to both parties. The appropriate use of terminology will be determined on a case-by-case basis.

2. Introduction

2.1 We recognise that safeguarding, child protection, and promoting the welfare of children is an essential part of our duty of care to all students. As such, all staff and governors have a responsibility to provide a safe environment in which children can learn. We understand that safeguarding, child protection and promoting the welfare of all children is everyone's responsibility and that everyone has a role to play in protecting children. We recognise that our school is part of a wider safeguarding system for children and work closely with other agencies to promote the welfare of children. We maintain an attitude of 'it could happen here' and will consider what is in the best interests of each child in line and upholding the Human Rights Act 1998 and Equality Act 2010.

2.2 The purpose of this policy is to;

- Promote safeguarding and child protection and to demonstrate St. Elizabeth's commitment to keeping children safe;
- Provide all members of staff with the information required to meet their safeguarding duty and protect children from harm;
- Provide stakeholders with clear information relating to *St. Elizabeth's* safeguarding and child protection procedures;
- Ensure that staff understand, can recognise and can respond to the indicators of abuse, exploitation or neglect;

- Ensure that all staff are aware of their mandatory reporting duty in relation to Section 5B of the Female Genital Mutilation Act 2003; and
- Ensure that children are protected from maltreatment or harm.

2.3 *St. Elizabeth's* is committed to the following principles;

- All children have the right to be protected from harm.
- Children should feel safe and secure and cannot learn unless they do so.
- All staff are responsible for keeping children safe and have a responsibility to act if they think a child is at risk of harm.
- All staff take on a responsibility to promote children's welfare
- Providing support to families and/or children as soon as a problem emerges is essential to improving outcomes for children and families.

2.4 Safeguarding aims

2.4.1 The safeguarding aims of *St. Elizabeth's*, in line with Keeping Children Safe in Education (September 2024) are to;

- work to identify children who are suffering or likely to suffer abuse, exploitation or neglect and act to protect them;
- work with relevant services and agencies to ensure that children are protected from harm;
- provide a learning environment for children which is safe and secure;
- teach children how to keep themselves safe and provide structures for them to raise concerns if they are worried or at risk of harm;
- support children's mental health and wellbeing;
- ensure that we adhere to safer recruitment guidance and legislation, deal promptly with allegations of abuse against staff and take bullying and harassment seriously;
- train staff effectively in all safeguarding issues (including online safety) and in their responsibilities for identifying and protecting children that are or may be at risk of harm;
- have a designated safeguarding lead and designated deputies, who will provide support to staff, students and families;
- recognise that all children may be vulnerable to abuse, but be aware that some children have increased vulnerabilities due to special educational needs or disabilities or particular protected characteristics (LGBTQ+, etc);
- maintain a robust recording system for any safeguarding or child protection information;
- ensure that everyone in *St. Elizabeth's* understands the safeguarding procedures; and to
- regularly review policies and procedures to ensure that children are protected to the best of our ability.

2.5 This policy adheres to the following documents;

- [Keeping Children Safe in Education \(2024\)](#)
- [Working Together to Safeguard Children 2018 \(updated 2022\)](#)
- [Guidance for Safer Working Practice for those working with children and young people in education settings \(May 2019\)](#)

- [Guidance for Safer Working Practice for those working with children and young people in education settings addendum \(April 2020\)](#)
- [What to do if you are worried a child is being abused: Advice for practitioners \(2015\)](#)

2.6 We continue to work closely with the Local Authority and the Coventry Safeguarding Children Partnership to safeguard children across the city.

2.7 Please note that there are a number of other documents (statutory and non-statutory) that inform our policy and practice. A list of these can be found in Annex B of Keeping Children Safe in Education (September 2024).

2.8 This policy should be read in conjunction with the following policies;

Links to these policies can be found in **Appendix A**.

2.9 Scope

2.9.1 This policy applies to all teaching, non-teaching, support, supply, peripatetic, contract staff, governors, volunteers and trustees working in or on behalf of *St. Elizabeth's*. All references in this document to 'staff' or 'members of staff' should be interpreted as relating to the aforementioned unless otherwise stated.

2.9.2 Rather than duplicating content from Keeping Children Safe in Education (September 2024) in this policy, it should be understood that *St. Elizabeth's* will always refer to this document as the benchmark for all safeguarding practice.

3. Roles and Responsibilities

3.1 The Role of the MAC Directors:

3.1.1 *St. Elizabeth's* has a Local Governing Body and the Holy Cross Catholic MAC has a Board of Directors that delegate leadership responsibility for safeguarding to each individual school; the Local Governing Body and Board of Directors have an oversight of roles and responsibilities. The MAC Directors will:

- Adopt Coventry's Child Protection and Safeguarding Policy as the MAC-wide policy which will be adopted by each school in the MAC.
- Ensure up to date training is provided and legal compliance issues are met
- Ensure that a Single Central Record is maintained in each Holy Cross MAC establishments
- Ensure that all MAC Directors and Governors receive safeguarding training.
- Ensure that at least one Director on any recruitment panel has completed safer recruitment training.
- Monitor safeguarding practice across the MAC and take appropriate action where safeguarding practice is falling below the standards expected.

3.1.1 Governing bodies have a strategic leadership responsibility for our safeguarding arrangements. We have a senior board level lead role carried out by John Teahan. Part 2 of

Keeping Children Safe in Education (September 2024) sets out the responsibilities of governing bodies. As part of these overarching responsibilities the Governing Body will;

- Have a strategic leadership responsibility for *St. Elizabeth's* safeguarding arrangements
- Aware of the obligations under the Human Rights Act 1998 , the Equality Act 2010 and the Public Sector Equality Duty
- Ensure that they comply with their duties under legislation;
- Ensure a whole *school* approach to safeguarding, including the use of mobile and smart technology in school;
- Ensure that policies, procedure and training are effective and comply with the law at all times and that they allow concerns to be responded to in a timely manner;
- Ensure *St. Elizabeth's* consider local authority and Coventry Safeguarding Children Partnership policies and supply information as requested by the safeguarding partners (the Local Authority, a clinical commissioning group for an area within the local authority and the chief office of police for a police area within the local authority);
- Ensure *St. Elizabeth's* have an effective child protection policy, that it is published on *St. Elizabeth's* website <https://www.ste.hccmac.co.uk/> or available via the school office and review this annually;
- Ensure *St. Elizabeth's* have a staff behaviour policy or Code of Conduct which refers to low level concerns, allegations against staff and whistleblowing procedures alongside acceptable use of technologies;
- Ensure that all staff and governors undergo safeguarding and child protection training on induction (including online safety and filters and monitoring processes) and this is regularly updated;
- Ensure *St. Elizabeth's* contribute to multi-agency working in line with statutory guidance;
- Ensure that there are clear systems and processes in place for identifying when children may be experiencing mental health problems;
- Ensure that children are taught about safeguarding, including online safety as a whole *school* approach and curriculum planning but recognising that a one size fits all approach may not be appropriate for all children. See section 12 of this policy for further information;
- Put in place and follow appropriate safeguarding responses for children who are absent from education;
- Appoint an appropriate member of staff from the senior leadership team to the role of Designated Safeguarding Lead;
- Understand the local criteria for action and local protocol for assessment;
- Recognise the importance of information sharing between practitioners and local agencies but take a risk-based approach to level of information that is provided to temporary staff, volunteers and contractors;
- Ensure that appropriate filters and monitoring systems are in place to keep children safe online and share information regarding online abuse and risks including where to access advice with parents and carers;
- Respond to allegations of abuse against the headteacher whilst ensuring there are procedures in place to manage safeguarding concerns or allegations against staff (including supply staff, volunteers and contractors); and
- Ensure safer working practice is embedded and effective within policies.

3.2. The Role of the Headteacher

3.2.1 The headteacher will;

- Ensure that this policy is reviewed annually at minimum and ratified by the governing body;
- Ensure that this policy and associated procedures are adhered to by all staff;
- Ensure that all staff are made aware of the named governor for safeguarding and the Designated Safeguarding Lead;
- Ensure that the role of 'Designated Safeguarding Lead' is explicit in the role-holder's job description including leading on filters and monitoring processes;
- Decide whether to have one or more deputy safeguarding leads and ensure they are trained to the same standard as the Designated Safeguarding Lead;
- Organise appropriate cover for the role of Designated Safeguarding Lead for any out of hour/out of term activities;
- Appoint a 'Designated Teacher for Looked-After and Previously Looked-After Children' to promote the educational achievement of children looked after;
- Appoint a lead for online safety; (DSL will still retain ultimate responsibility for this)
- Promote a whole school approach to safeguarding;
- Promote resilience to social and emotional wellbeing, which is tailored to the needs of the children;
- Ensure that all recruitment follows the 'Safer Recruitment' guidance and a single, central record is maintained with details of all members of staff who are in contact with children;
- Respond to low level concerns and allegations of abuse against all other members of staff including supply staff, volunteers and contractors;
- Refer cases where a person is dismissed or left due to risk/harm to a child to the Disclosure and Barring Service and Teaching Regulation Agency as required;
- Ensure that St. Elizabeth's collaborates with Children's Services, the Police, Health services and other services to; promote the welfare of children; provide a co-ordinated offer of early help assessments when need is identified; contribute to inter-agency plans for children subject to children protection plans and to protect children from harm;
- Safeguard children's wellbeing and maintain public trust in the teaching profession as part of their professional duties (Teaching Standards, 2012); and
- Ensure that children's Services (from the host local authority or placing authority) have access to St. Elizabeth's to conduct, or to consider whether to conduct a section 47 or section 17 assessment, as per Keeping Children Safe in Education (September 2024).

3.3 The Role of the Designated Safeguarding Lead

3.3.1 The Designated Safeguarding Lead (DSL) for St. Elizabeth's is Julie Miles. Our Deputy Designated Safeguard Lead (DDSL) in the DSL's absence is Michael Doyle.

The Designated Safeguarding Lead will;

- Take overall lead responsibility for safeguarding and child protection (including online safety and filters and monitoring);
- Liaise with the safeguarding partners and work with other agencies in line with Working Together to Safeguard Children (2023);

- Always be available during term time school hours for staff in *St. Elizabeth's* to discuss safeguarding concerns. If they are not available, a deputy will be made available;
- Undergo training to provide them with the knowledge and skills required to carry out this role updated a minimum of biannually;
- Act as a source of support and expertise on matters relating to safeguarding and child protection to ensure that other members of staff can carry out their safeguarding duty;
- Be best placed to advise on the response to safeguarding concerns;
- Identify if children may benefit from early help;
- Act as a point of contact with the safeguarding partners;
- Make referrals to Coventry's Multi-Agency Safeguarding Hub (MASH) where children have been harmed or are at risk of significant harm;
- Make referrals to the Channel programme where there is a radicalisation concern and/or support staff that make a referral to Channel;
- Support *St. Elizabeth's* with regards to their responsibilities under the Prevent duty and provide advice and support on protecting children from radicalisation;
- Refer cases to the police where a crime may have been committed¹;
- Ensure all staff have read and understood Part 1 and/or Annex A of Keeping Children Safe in Education (September 2024);
- Update their knowledge and skills regularly and keep up with any developments relevant to their role;
- Provide staff in school with the knowledge, skills and support required to safeguard children;
- Take responsibility for the accurate and timely recording of safeguarding and child protection concerns and take overall responsibility for safeguarding and child protection files;
- Take responsibility for the transfer of safeguarding files when a child leaves *St. Elizabeth's*;
- Attend or ensure an appropriate representative attends multi-agency safeguarding or child protection meetings;
- Promote supportive engagement with parents and/or carers in safeguarding and promoting the welfare of children;
- Work closely with other relevant education professionals (e.g. SENCO, Virtual School Head) to ensure children with additional vulnerabilities are safeguarded;
- Help to promote educational outcomes of child who have experienced or are experiencing safeguarding or child protection issues by sharing relevant information with teachers and *St. Elizabeth's* leadership team;
- Promote a 'culture of safeguarding', in which every member of *St. Elizabeth's* community acts in the best interests of the child;
- Ensuring *St. Elizabeth's* knows who its cohort of children or have or have had a social worker are, understanding their academic progress and attainment, and maintaining a culture of high aspirations;
- Regularly meet (every half term at a minimum) with the safeguarding link governor and/or Chair of Governors to review safeguarding in *St. Elizabeth's*; and
- Liaise with the headteacher regarding safeguarding cases and issues.
- Liaise with the senior mental health lead when safeguarding concerns are linked to mental health

- Be Aware of the requirement for children to have an Appropriate Adult – PACE code C 2019

3.3.2 Further details on the role of the Designated Safeguarding Lead can be found in Annex C of Keeping Children Safe in Education (September 2024).

3.4 The Role & Responsibilities of all Staff within School

3.4.1 School staff play a particularly important role because they are in a position to identify concerns early in order to provide help for children. All staff in *St. Elizabeth's*;

- Have a responsibility to provide a safe environment, where children can learn;
- Will be able to identify indicators of abuse, exploitation or neglect; with an awareness of safeguarding issues that put children at risk of harm and behaviours associated with these risks;
- Should know what to do if a child tells them that he/she is being abused, exploited or neglected but that children may not feel ready or know how to tell someone that they are being abuse, exploited or neglected and/or recognise their experience as harmful;
- Will be aware of indicators of child-on-child abuse and procedures to deal with this;
- All staff, but especially the DSL and deputies, will also consider whether children are at risk of abuse or exploitation in situations outside their families;
- Will be made aware of; the safeguarding and child protection policy; *St. Elizabeth's* behaviour policy; the staff behaviour policy; information about the safeguarding response to children missing in education; the role of the designated safeguarding lead and systems in *St. Elizabeth's* that support safeguarding and child protection;
- Will be provided with a copy of Part 1/Annex A of Keeping Children Safe in Education (September 2024) annually and receive annually updated training on their safeguarding roles and responsibilities;
- Will receive regularly updated safeguarding and child protection training including online safety;
- Will receive safeguarding updates throughout the year as part of continuous professional development;
- Should be able to contribute to the development of safeguarding policy and practice;
- Will be made aware of the early help assessment process and understand their role in it;
- Should be prepared to identify children who may benefit from early help and will discuss early help requirements with the safeguarding lead in the first instance;
- May be required to support social workers and other agencies following a referral;
- Will be made aware of the process for making referrals to Children's Services (through the MASH), understand statutory assessments and the role that they may be expected to play in such assessments;
- Should be prepared to make referrals to the MASH if they have concerns about a child's welfare and understand the role that they may be expected to play in such assessments;
- Understands the referral process to the (LADO) and the role they play should they have concerns or allegations are made against any member of staff;
- Should always seek advice from the Designated Safeguarding Lead if they are unsure; and

- All teachers should safeguard children’s wellbeing and maintain public trust in the teaching profession as part of their professional duties (Teaching Standards, 2012).

3.5 Multi-Agency Working

3.5.1 St. Elizabeth’s is committed to multi-agency working and operates under Working Together to Safeguard Children (2018) and local safeguarding arrangements.

3.5.2 St. Elizabeth’s will work with Children’s Services the Police, Health services, local Early Help practitioners and other relevant agencies to promote the welfare of children and protect them from harm.

3.5.3 We work closely with our local Family Hub to ensure children receive appropriate, co-ordinated Early Help Assessments. The local hub is Families For All, Foleshill Road, Coventry. Our EHAC is Jupinder Kooner (jupinder.kooner@coventry.gov.uk) we meet with her each half term to discuss any vulnerable families and possible early help assessments

3.5.4 The Coventry Safeguarding Children Partnership (CSCP) have designated that schools and colleges are a named ‘relevant agency’. As such, St. Elizabeth’s is under a statutory duty to co-operate with published CSCP arrangements.

4. Types of abuse

4.1 As outlined above, all staff will be trained in indicators of abuse, exploitation and neglect and should be able to recognise signs of these. We recognise that abuse, exploitation and neglect along with other safeguarding issues are complex and often multidimensional and therefore don’t fall solely under one category. Types of abuse or harm can take many forms including directly inflicting harm on a child or failing to protect a child from harm online as well as face to face both inside and outside of St. Elizabeth’s/college as well as online, including the multi-faceted occurrence of factors causing emotional harm.

The four main types of abuse that staff are trained to recognise are;

- Physical abuse;
- Sexual abuse;
- Emotional abuse;
- Neglect.

4.2 Types of abuse (Taken from Keeping Children Safe in Education, 2023)

Type of abuse	Information
Abuse	A form of maltreatment of a child. Somebody may abuse or neglect a child by inflicting harm, or by failing to act to prevent harm. Harm can include ill treatment that is not physical as well as the impact of witnessing ill treatment of others. This can be particularly relevant, for example,

Type of abuse	Information
	<p>in relation to the impact on children of all forms of domestic abuse. Children may be abused in a family or in an institutional or community setting by those known to them or, more rarely, by others. Abuse can take place wholly online, or technology may be used to facilitate offline abuse. Children may be abused by an adult or adults, or another child or children.</p>
Physical abuse	<p>A form of abuse which may involve hitting, shaking, throwing, poisoning, burning or scalding, drowning, suffocating or otherwise causing physical harm to a child. Physical harm may also be caused when a parent or carer fabricates the symptoms of, or deliberately induces, illness in a child.</p>
Emotional abuse	<p>The persistent emotional maltreatment of a child such as to cause severe and persistent adverse effects on the child's emotional development. It may involve conveying to a child that they are worthless or unloved, inadequate, or valued only insofar as they meet the needs of another person. It may include not giving the child opportunities to express their views, deliberately silencing them or 'making fun' of what they say or how they communicate. It may feature age or developmentally inappropriate expectations being imposed on children. These may include interactions that are beyond a child's developmental capability, as well as overprotection and limitation of exploration and learning, or preventing the child participating in normal social interaction. It may involve seeing or hearing the ill-treatment of another. It may involve serious bullying (including cyber bullying), causing children frequently to feel frightened or in danger, or the exploitation or corruption of children. Some level of emotional abuse is involved in all types of maltreatment of a child, though it may occur alone.</p>

Type of abuse	Information
Sexual abuse	<p>Involves forcing or enticing a child or young person to take part in sexual activities, not necessarily involving violence, whether or not the child is aware of what is happening. The activities may involve physical contact, including assault by penetration (for example, rape or oral sex) or non-penetrative acts such as masturbation, kissing, rubbing and touching outside of clothing. They may also include non-contact activities, such as involving children in looking at, or in the production of, sexual images, watching sexual activities, encouraging children to behave in sexually inappropriate ways, or grooming a child in preparation for abuse. Sexual abuse can take place online, and technology can be used to facilitate offline abuse. Sexual abuse is not solely perpetrated by adult males. Women can also commit acts of sexual abuse, as can other children.</p> <p>The sexual abuse of children by other children is a specific safeguarding issue in education and all staff should be aware of this and of <i>St. Elizabeth's</i> policy and procedures for dealing with this.</p>
Neglect	<p>The persistent failure to meet a child's basic physical and/or psychological needs, likely to result in the serious impairment of the child's health or development. Neglect may occur during pregnancy, for example, as a result of maternal substance abuse. Once a child is born, neglect may involve a parent or carer failing to: provide adequate food, clothing and shelter (including exclusion from home or abandonment); protect a child from physical and emotional harm or danger; ensure adequate supervision (including the use of inadequate care-givers); or ensure access to appropriate medical care or treatment. It may also include neglect of, or unresponsiveness to, a child's basic emotional needs.</p>

4.3 Indicators of abuse can be found in Appendix B.

4.4 If a child is in immediate danger or at risk of harm, a referral will be made to children's services (through the MASH) and any member of staff can make this referral. A Designated or Deputy Designated Safeguarding Lead should be available at all times, but in exceptional circumstances the member of staff should speak to a member of the Senior Leadership Team or seek advice directly from Children's Service and then take appropriate action. The Designated Safeguarding Lead should be made aware as soon as possible.

4.5 Staff, parents and the wider community should report any concerns that they have about the welfare of children, however minor or seemingly insignificant. Staff should not assume that someone else will report concerns.

4.6 St. Elizabeth's recognises that any child can be the victim of abuse and may benefit from early help. However, St. Elizabeth's will be particularly vigilant to potential need for early help if a child;

- is disabled or has certain health conditions and has specific additional needs;
- has special educational needs (whether or not they have a statutory education, health and care plan);
- Has experienced multiple suspensions, is at risk of being permanently excluded from schools, colleges and in alternative provision or a pupil referral unit
- has a mental health need;
- is a young carer;
- is showing signs of being drawn in to anti-social or criminal behaviour, including gang involvement and association with organised crime groups or county lines;
- is frequently missing/goes missing from care or from home;
- is a risk of modern slavery, trafficking, sexual or criminal exploitation;
- is misusing drugs or alcohol themselves;
- has a family member in prison, or is affected by parental offending;
- is in a family circumstance presenting challenges for the child, such as substance abuse, adult mental health problems or domestic abuse;
- has returned home to their family from care;
- is showing early signs of abuse and/or neglect;
- is at risk of being radicalised or exploited;
- is at risk of 'honour-based' abuse such as Female Genital Mutilation or Forced Marriage;
- is persistently absent from education, including persistent absences for part of St. Elizabeth's day.
- is a privately fostered child.

4.7 St. Elizabeth's recognises that abuse can take many different forms. Staff will also receive training on the following issues and action will be taken if St. Elizabeth's believes that a child is at risk of or is the victim of;

- bullying, including cyberbullying, prejudice based and discriminatory
- child criminal exploitation and sexual exploitation including involvement in county lines);
- domestic abuse;
- emotional abuse;
- fabricated or induced illness;
- faith-based abuse;
- female genital mutilation;
- forced marriage;
- gangs or youth violence;
- gender-based violence;
- hate;
- mental health;

- neglect;
- peer on peer abuse;
- physical abuse;
- radicalisation;
- relationship abuse;
- serious violence and harassment;
- sexual abuse;
- sexual violence or sexual harassment (including peer on peer abuse);
- sharing of consensual or non-consensual nude and semi-nude images/videos;
- So-called 'honour-based' abuse;
- trafficking and modern slavery.

4.8 St. Elizabeth's will also take action to protect;

- Children missing education;
- Children missing from home or care.

4.8.1 There are other familial issues that can have a detrimental impact on children.

We work with other agencies in line with Keeping Children Safe in Education (2024) to support children and families in the following circumstances;

- Children facing the court procedures and/or children in the court system;
- Children with family members in prison;
- Children who are homeless;
- Children who need a social worker.

4.9 Children potentially at greater risk of harm

4.9.1 *St. Elizabeth's* recognises that some children need a social worker due to abuse, neglect or complex family circumstances and that abuse and trauma can leave children vulnerable to further harm, as well as educational disadvantage.

4.9.2 The Designated Safeguarding Lead will hold information relating to social workers working with children in *St. Elizabeth's*.

4.9.3 This information will inform decisions about safeguarding and promoting welfare (including the provision of pastoral and/or academic support).

4.10 Children absent from Education

4.10.1 *St. Elizabeth's* understands that children being absent from education for prolonged periods and/or repeat occasions can act as a vital warning sign to a range of safeguarding issues including neglect, child sexual and criminal exploitation – particularly county lines.

4.10.2 *St. Elizabeth's* will report information to the Local Authority when problems are first emerging and if there is a need for the removal of a child from roll.

4.11 Elective Home Education

4.11.1 *St. Elizabeth's* recognises that many home educated children have a positive learning experience and the decision is one with the child's best interests at heart however elective home education can mean that some children are not in receipt of suitable education.

4.11.2 Since 2016, *St. Elizabeth's* has a statutory duty to inform the Local Authority of all deletions from roll. When Elective Home Education is the reason for this removal, the Local authority and other key professionals will work alongside *St. Elizabeth's* to coordinate a meeting with parents where possible ideally before a final decision is made.

4.12 Children requiring Mental Health support

4.12.1 *St. Elizabeth's* recognise that safeguarding and promoting the welfare of children includes preventing the impairment of children's mental health or development.

4.12.2 All staff will be aware that mental health problems may be an indicator that a child is suffering or is at risk of suffering abuse, neglect or exploitation.

4.12.3 Staff will not attempt to make a diagnosis of a mental health problem unless they are appropriately trained.

4.12.4 We recognise that staff are well-placed to observe behaviour that may indicate that a child is experiencing a mental health problem, or is at risk of developing one. There are clear systems and processes in place for identifying possible mental health problems. If staff are concerned that a child is suffering a mental health problem, they should speak to the SENDCo in the first instance who will liaise with parents to find the most suitable route to address the needs of the child, this may involve sessions with the school learning mentor, Sarah Basson, a referral to SEMHL (Social, Emotional, Mental Health and Learning) or the school educational psychologist as well as CAMHS (Child Adolescent Mental Health Services) if deemed appropriate.

4.12.5 If staff are concerned that a child is experiencing a mental health problem that is also a safeguarding concern, they must report this to the Designated Safeguarding Lead (or deputy Designated Safeguarding Lead) immediately.

4.12.6 *St. Elizabeth's* Mental Health first aider is Julie Miles. Staff and children are made aware that they can talk to the mental health first aider in confidence at any time. They will be signposted in the most appropriate direction. The Mental health and well-being lead is also Julie Miles. Regular meetings are also held with staff representatives to share any issues. Staff well-being is kept in mind during the introduction of any new initiatives or policies.

4.12.7 Further information, guidance and advice regarding mental health can be found on page 49 of Keeping Children Safe in Education 2024.

4.13 Children who are Lesbian, Gay, Bi (LGBT+) or may be gender questioning children

4.13.1 The fact that a child or a young person may be LGBT is not in itself an inherent risk factor for harm. However, children who are LGBT can be targeted by other children. In some cases, a child who is perceived by other children to be LGBT (whether they are or not) can be just as vulnerable as children who identify as LGBT.

4.13.2 In line with updated Keeping Children Safe In Education (2024) guidance, it is important to consider the Cass review, which identified that caution is necessary for children questioning their gender as there remain many unknowns about the impact of social transition and children may well have wider vulnerabilities, including having complex mental health and psychosocial needs, and in some cases additional diagnoses of autism spectrum disorder and/or attention deficit hyperactivity disorder.

4.13.3 It recommended that when families/carers are making decisions about support for gender questioning children, they should be encouraged to seek clinical help and advice. When parents are supporting pre-pubertal children, clinical services should ensure that they can be seen as early as possible by a clinical professional with relevant experience.

4.13.4 As such, when supporting a gender questioning child, schools should take a cautious approach and consider the broad range of their individual needs, in partnership with the child's parents (other than in the exceptionally rare circumstances where involving parents would constitute a significant risk of harm to the child), including any clinical advice that is available and how to address wider vulnerabilities such as the risk of bullying. Schools should refer to our Guidance for Schools and Colleges in relation to Gender Questioning Children, when deciding how to proceed.

4.13.5 Risks can be compounded where children who are LGBT lack a trusted adult with whom they can be open. It is therefore vital that staff endeavour to reduce the additional barriers faced and provide a safe space for them to speak out or share their concerns with members of staff.

4.13.6 LGBT inclusion is part of the statutory Relationships Education, Relationship and Sex Education and Health Education curriculum and there is a range of support available to help schools counter homophobic, biphobic and transphobic bullying and abuse.

5. Responding to signs of abuse

5.1 If a member of staff, parent or member of the public is concerned about a child's welfare, they should report it to the designated safeguarding lead as soon as possible. On occasions when the designated safeguarding lead is not available, it should be reported to the deputy safeguarding lead without delay. Although any member of staff can make a referral to Children's Services where possible there should be a conversation with the Designated Safeguarding Lead.

5.2 If anyone other than the Designated Safeguarding Lead makes a referral to Children's Services or to the police, they should inform the DSL as soon as possible.

5.3 All staff will be alert to indicators of abuse and will report any of the following to the Designated Safeguarding Lead immediately;

- Any concern or suspicion that a child has sustained an injury outside what is reasonably attributable to normal play;
- Any concerning behaviours exhibited by children that may indicate that they have been harmed or are at risk of harm, including unusual changes in mood or behaviour, concerning use of language and/or concerning drawings or stories.
- Any significant changes in attendance or punctuality;
- Any significant changes in a child's presentation;
- Any concerns relating to people who may pose a risk of harm to a child; and/or
- Any disclosures/allegations of abuse that children have shared.

5.4 There will be occasions where a child discloses/alleges abuse directly to a member of staff. If this happens, the member of staff will;

- listen carefully to the child and believe what they are saying;
- not promise confidentiality, as information may need to be passed on so the child and family can receive additional support;
- only ask for clarification if something is unclear and will not ask 'leading' questions;
- report disclosure to the designated safeguarding lead as soon as possible, certainly by the end of the day;
- only discuss the issue with colleagues that need to know about it; and
- will write up the disclosure and pass it to the designated safeguarding lead. It is likely they will have had a discussion with the DSL prior to this but delay should be avoided.

5.5 The designated safeguarding lead will make a decision about the action that needs to be taken following a member of staff raising a concern about a child, or following a direct disclosure recording a clear rationale. The DSL may consider the following options;

- Managing support for the child internally within school;
- Seek advice from the social worker advice line in the MASH;
- Instigate single agency intervention and work directly with the family to improve the situation;
- Offer an Early Help Assessment to provide multi-agency help to a family;
- In cases where children are deemed to be at significant risk of harm, the DSL will refer cases to the MASH for consideration for statutory intervention. Parental consent will be obtained wherever possible before referring cases to the MASH. However, if *St. Elizabeth's* is worried that telling parents will mean the child is at greater risk of harm, we may do this without informing them.
- If parents do not consent to a referral but *St. Elizabeth's* believes that a child is at significant risk of harm, a referral will still be made to Children's Services.

5.6 For further information about the Coventry Safeguarding Children Partnership's 'Right Help, Right Time' guidance, which is used by *St. Elizabeth's* to make decisions about protecting children, please visit <http://www.coventry.gov.uk/righthelprighttime>.

5.7 See page 24 for flowchart of actions that will be taken where there are concerns about a child (taken from Keeping Children Safe in Education, September 2024).

5.8 In cases where members of staff become aware that Female Genital Mutilation (FGM) has been carried out on a female below the age of 18, they have a mandatory duty to report this to

the police without delay and will do so. Staff should refer this to the DSL first, but the legislation requires regulated health and Children's Service professionals and teachers in England and Wales to make a report to the police where, in the course of their professional duties, they either;

- are informed by a girl under 18 that an act of FGM has been carried out on her; or
- observe physical signs which appear to show that an act of FGM has been carried out on a girl under 18 and they have no reason to believe that the act was necessary for the girl's physical or mental health or for purposes connected with labour or birth.

If you believe a child is at risk of FGM, a referral to the MASH is also required.

5.9 *St. Elizabeth's* have a duty to refer any children who are living in a private fostering arrangement to the local authority. Private fostering is when a child under the age of 16 (or under 18 if disabled) is cared for by someone who is not their parent or a close relative. This is a private arrangement made between a parent and a carer, expected to last 28 days or more, or *St. Elizabeth's* are aware the 28 days has been exceeded.

5.10 All schools are subject to a duty under section 26 of the Counter-Terrorism and Security Act 2015 in the exercise of their functions to have "due regard" to the need to prevent people from being drawn into terrorism. See Appendix B for further information on *St. Elizabeth's* Prevent duty.

5.11 If any member of staff is unsure about signs of abuse or neglect, they should speak to the Designated Safeguarding Lead.

5.12 Child on Child Abuse

5.12.1 *St. Elizabeth's* understands that both adults and other children can perpetrate abuse, and can happen inside and outside of school, online or face to face. Child on Child abuse is taken very seriously and can include bullying (including cyber-bullying, prejudice-based and discriminatory bullying), abuse in intimate personal relationships between children, physical abuse, sharing of consensual or non-consensual images of videos, causing someone to engage in sexual activity without consent, sexual violence and/or harassment, upskirting, and initiation/hazing ceremonies. *St. Elizabeth's* recognise that safeguarding issues can manifest as child-on-child abuse. **See anti-bullying policy and behaviour policy:**

[Anti-bullying policy](#)

[Behaviour policy](#)

5.12.2 All members of staff will be made aware of *St. Elizabeth's* policy and procedures with regards to child-on-child abuse. *St. Elizabeth's* will ensure staff understand what is meant by child-on-child abuse and *St. Elizabeth's* policy on child-on-child abuse by ensuring that staff are given adequate training on the issue, ensuring that they read the school behaviour policy, the school safeguarding policy and the relevant parts of keeping children safe in education. They will have regular updates throughout the school year.

5.12.3 *St. Elizabeth's* will work to prevent child on child abuse by focusing on these issues in PSHE/ RHSE lessons, careful supervision of children during unstructured times, in communal

areas such as toilets and cloakrooms, ensuring that children know who to talk to in the event of incidences occurring, taking prompt action when incidents arise including reporting to the Head Teacher, parents and other authorities (e.g. the police, the MASH) if necessary to resolve the situation .

5.12.4 Although it is recognised that if there are no reported cases, such abuse may still be taking place. If an allegation of child-on-child abuse is made, St. Elizabeth's will investigate this by referring to the DSL/DDSL who will talk to both parties separately, inform parents if necessary and impart the most appropriate consequence. All conversations should be recorded on CPOMs. The situation will be resolved by reporting to the Head Teacher, parents and other authorities (e.g. the police, the MASH) if necessary.

5.12.5 In the event that an allegation of child-on-child abuse is made, victims, alleged perpetrators and any other children affected will be supported by the DSL and Learning mentor who will complete follow up work with both parties and referral to the MASH will be considered.

5.12.6 St. Elizabeth's will never pass off child on child abuse as 'banter', 'having a laugh. 'part of growing up' or other such termination that does not recognise the harm caused. This should be a Zero-tolerance approach as this could lead to a culture of unacceptable behaviours. It is recognised with this, that all child-on-child abuse is unacceptable and will be taken seriously.

5.12.7

5.12.8 *St. Elizabeth's* will adhere to guidance set out in Keeping Children Safe in Education (2024) when responding to incidents of child-on-child abuse.

5.12.9 All staff will be made aware that 'upskirting' is a criminal offence.

5.13 Child Sexual Exploitation (CSE) and Child Criminal Exploitation (CCE)

5.13.1 Both CCE and CSE are forms of abuse that occur when an individual or group take advantage of an imbalance in power to coerce, manipulate or deceive a child into taking part in sexual or criminal activity, in exchange for something the victim needs or wants, and/or for the financial advantage or increased status of the perpetrator through violence or threat of violence. CCE and CSE can affect both males and females and can include children that have been moved for the purpose of exploitation (trafficking).

5.13.2 CCE can include children being forced or manipulated into transporting drugs or money through county lines, working in cannabis factories, shoplifting or pickpocketing, vehicle crime, threatening violence on others or even carrying weapons.

5.13.3 St. Elizabeth's is responsible for recognising children involved in CCE are victims of exploitation and should be recognised as such due to the harm they have experienced even if they appear to have consented to the criminal activity.

5.13.4 CSE is a form of child sexual abuse including physical contact and non-contact online activities including the internet or by phone. This can happen over time or as a one off and may happen without the child recognising this as abuse or harmful.

5.13.5 St. Elizabeth's recognises that children of the age of 16 and 17 who can legally consent to a sexual relationship may also be the victims of CSE but may not recognise this.

5.14 Sharing of consensual or non-consensual nude and semi-nude images or videos

5.14.1 “Sharing of consensual or non-consensual nude and semi-nude images or videos” refers to any sharing of youth-produced sexual imagery between children. This includes;

- A person under the age of 18 creating and sharing sexual imagery of themselves with a peer under the age of 18;
- A person under the age of 18 sharing sexual imagery created by another person under the age of 18 with a peer under the age of 18 or an adult;
- A person under the age of 18 being in possession of sexual imagery created by another person under the age of 18.

5.14.2 St. Elizabeth’s has a responsibility to educate children in the risks relating to ‘sharing consensual or non-consensual nude images or videos’ and how to keep themselves safe online.

5.14.3 Any incidents or suspected incidents of ‘sharing consensual or non-consensual nude images or videos’ should be reported to the DSL without delay. MAC [Online Safety Policy](#).

5.14.4 Once reported to the DSL, the DSL will decide on the appropriate course of action. This could include;

- Referrals to the MASH in regards to all parties involved (also the police if an urgent response required);
- Confiscation of mobile phones in line with guidance ‘Searching, Screening and Confiscation, (January 2018);
- Support for young people involved to prevent reoccurrence;
- Sanctions in accordance with the behaviour policy;

5.14.5 Any incidents of ‘sharing consensual or non-consensual nude images or videos’ involving the following will result in a MASH and sometimes a Police referral;

- Adult involvement;
- Coercion or blackmail;
- Children under the age of 13;
- Extreme, or violent content;
- Immediate risk of harm.

5.14.6 Staff will not view images or videos on pupil devices. Confiscated devices will be stored securely and passed to the relevant agencies.

5.14.7 We will work with parents as necessary if their child is involved in the sharing of consensual or non-consensual nude images or videos.

5.14.8 We operate a culture of safeguarding and young people should feel confident to disclose if they have sent an inappropriate image of themselves. Children will always be supported to retrieve and delete the images.

5.15 Domestic Abuse

5.15.1 Domestic abuse can be a single incident or a pattern of incidents. It can also include psychological, physical, sexual, financial or emotional acts of abuse.

5.15.2 St. Elizabeth's recognises that children can be a victim of Domestic Abuse by seeing, hearing or experiencing the effects or suffering domestic abuse in their own personal relationships. These all have a detrimental impact on children's health, well-being, development and ability to learn. The school is signed up to Operation Encompass which means that we receive notifications if the police are called out to deal with any domestic abuse & violence incidents. The DSL will make sensitive enquiries with the child concerned and offer support to the parent if this can be done without putting them at further risk.

5.16 Searching, Screening and Confiscation

5.16.1 Where necessary, searching, screening and confiscation will be used to safeguard a child/children in *St. Elizabeth's*.

5.16.2 St. Elizabeth's adheres to 'Searching, Screening and Confiscation: Advice for Schools (January 2018).

5.13.3 Please see the school Searching, Screening and Confiscation policy for further information.

[Searching, screening and confiscation policy](#)

5.17 Online Safety

5.17.1 *St. Elizabeth's recognises that in today's world, children need to be safeguarded from potentially harmful and inappropriate online material with many children having unlimited and unrestricted access to the internet via their mobile phone. The breadth of issues can be categorised currently into four areas of risk as taken from Keeping Children Safe In Education 2022:*

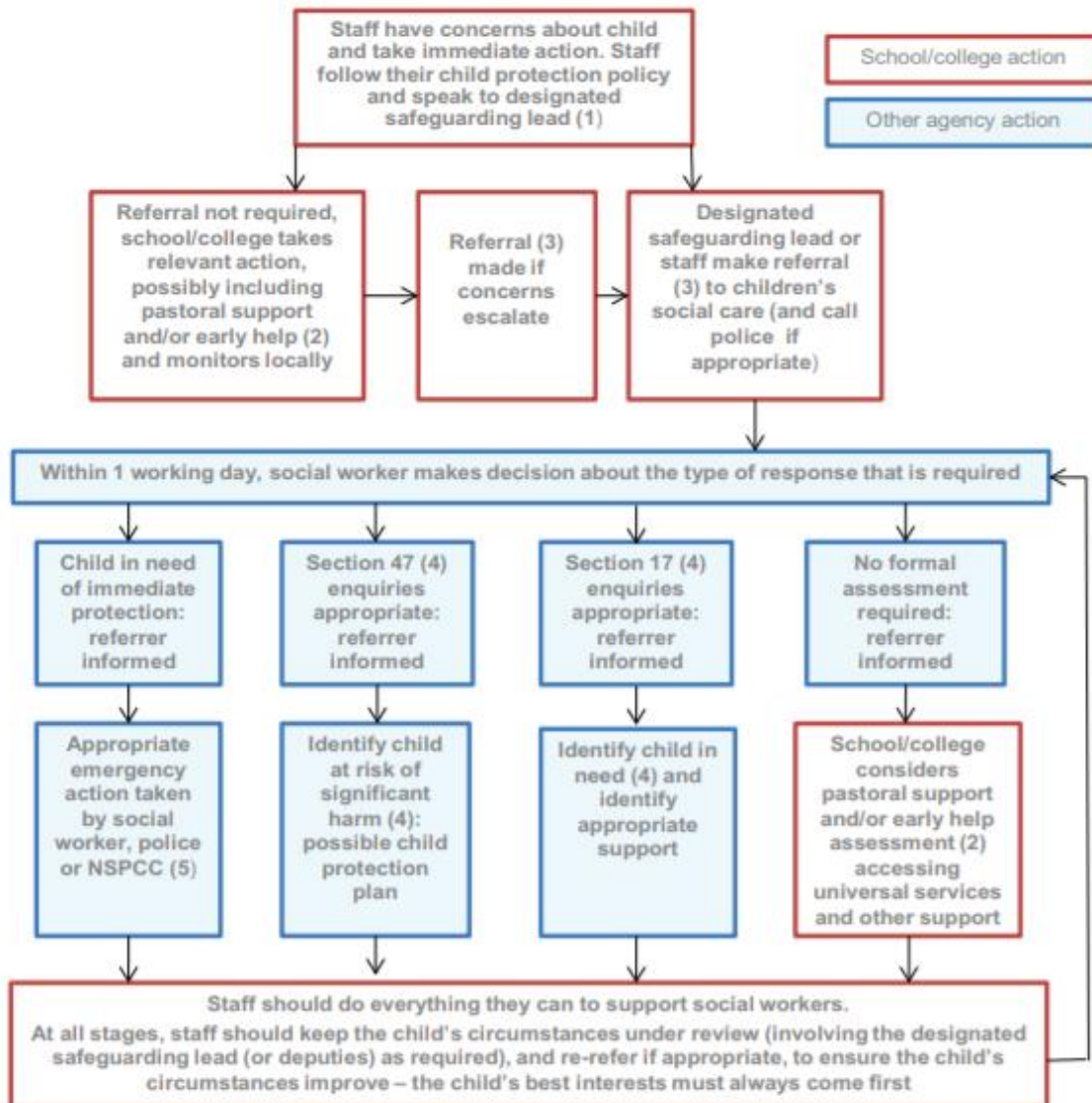
- *Content – being exposed to illegal, inappropriate, or harmful content (pornography, fake news, racism, misogyny, self-harm, suicide, anti-Semitism, radicalisation, and extremism)*
- *Contact – being subject to harmful online interaction with other users (peer to peer pressure, commercial advertising and adults posing as children or young adults with the intention to groom or exploit)*
- *Conduct – online behaviour that increases the likelihood of, or causes, harm (making, sending and receiving explicit images)*
- *Commerce – risks such as online gambling, inappropriate advertising, phishing and or financial scams*

5.17.2 *St. Elizabeth's understand that the above can take place on a student's phone or smart device (including smart watches) whilst at school/college or elsewhere. St. Elizabeth's have responded to this by having a whole school approach to online safety which aims to protect and educate students, parents and staff in their use of technology. Staff and Key stage 2 children are asked to sign to say they have read and understand the acceptable use policy. On-line safety is taught as a stand-alone awareness day but also as part of our PSHE/RSHE curriculum. On-line bullying will be dealt with according to our school behaviour policy. We aim to educate and raise awareness amongst parents about the dangers of their child being online through distribution of information and providing opportunities to come into school to learn more from third parties.*

5.17.3 *St. Elizabeth's has also established mechanisms to identify, intervene in and escalate any concerns highlighted through our filter and monitoring systems for both staff and students. The*

effectiveness of this is regularly reviewed with staff aware of how to escalate concerns. St. Elizabeth's uses the SENSO alerting system. This sends emails to the DSL and DDSL to inform us of any concerns. These could be false positives or issues typed in by staff recording a CPOMs entry. If the concern is legitimate, the person will be spoken to about what has flagged up and asked for an explanation. If it is a child then parents will be called in and if necessary, we will refer to the police, the MASH or PREVENT team depending on the nature of the concern.

Actions where there are concerns about a child



- (1) In cases which also involve a concern or an allegation of abuse against a staff member, see Part four of this guidance.
- (2) Early help means providing support as soon as a problem emerges at any point in a child's life. Where a child would benefit from co-ordinated early help, an early help inter-agency assessment should be arranged. Chapter one of [Working Together to Safeguard Children](#) provides detailed guidance on the early help process.
- (3) Referrals should follow the process set out in the local threshold document and local protocol for assessment. Chapter one of [Working Together to Safeguard Children](#).
- (4) Under the Children Act 1989, local authorities are required to provide services for children in need for the purposes of safeguarding and promoting their welfare. Children in need may be assessed under section 17 of the Children Act 1989. Under section 47 of the Children Act 1989, where a local authority has reasonable cause to suspect that a child is suffering or likely to suffer significant harm, it has a duty to make enquiries to decide whether to take action to safeguard or promote the child's welfare. Full details are in Chapter one of [Working Together to Safeguard Children](#).
- (5) This could include applying for an Emergency Protection Order (EPO).

5.18 To raise concerns about children, members of staff should contact the Multi-Agency Safeguarding Hub (MASH) by telephone to discuss the referral. They should then complete the online Multi-Agency Referral Form (MARF) and submit this to the MASH. St. Elizabeth's will follow up referrals if we do not receive feedback from Children's Services to ascertain the outcome of all referrals.

MASH Telephone number: 02476 788 555

MASH online referral form: <http://www.coventry.gov.uk/safeguardingchildren>

Out of hours Emergency Duty Team: 02476 832 222

Prevent/Channel Referrals: Refer to MASH (mash@coventry.gov.uk) and to CTU_GATEWAY@west-midlands.pnn.police.uk

5.18.1 If a child's situation does not appear to be improving following a referral, St. Elizabeth's may re-refer the child. We will also consider using the [Coventry Safeguarding Children Partnership's Managing Professional Disagreements policy](#) to ensure that our concerns have been addressed and that the situation improves for the child.

6. Record-keeping

6.1 All concerns, discussions and decision made will be recorded in writing and kept confidential and stored securely.

6.2 A written record of all safeguarding and/or child protection concerns, discussions and decisions made will be kept in individual children's files. This will be separate from the main school file and will only be accessed by the relevant safeguarding staff.

6.3 *St. Elizabeth's* keeps all safeguarding files electronically, *using a system called Child Protection Online Management System (CPOMS)*

6.4 Staff will submit all concerns in writing to the DSL at the earliest opportunity. This may be after having a verbal conversation, but conversations will also be followed up in writing.

6.5 In the event that a child moves school, the safeguarding file will be transferred to the new setting securely and separately from the main school file in a timely manner (within 5 days for in-year transfers). Once received by the new school, this school will not retain the information.

6.6 St. Elizabeth's will seek to hold at least two emergency contacts for every child.

6.7 All data processed by *St. Elizabeth's* is done so in line with the General Data Protection Guidelines and the Data Protection Act (2018). Please see the following policies for additional information;

https://www.hccmac.co.uk/_site/data/files/documents/policies/data-protection/C2518958B4C5EF8B21581159351B29ED.pdf

https://www.hccmac.co.uk/_site/data/files/documents/policies/data-protection/2C775D1D013F70D8C31E33D0D2EA12F8.pdf

6.8 Further information regarding information sharing and data processing in relation to safeguarding can be found in Part One of Keeping Children Safe in Education (September 2024).

7. Photography and Images

7.1 Consent from parents to photograph children at school events for promotional reasons will be sought when the child joins *St. Elizabeth's*.

7.2 Parents can withdraw consent at any time and must notify *St. Elizabeth's* if they do not wish their child's photographs to be used.

7.3 Photographs of children used publicly will not be displayed with their name or other identifiable personal information.

7.4 Photographs of children will be processed in line with the General Data Protection Regulation.

<https://www.hccmac.co.uk/site/data/files/documents/policies/data-protection/C2518958B4C5EF8B21581159351B29ED.pdf>

<https://www.hccmac.co.uk/site/data/files/documents/policies/data-protection/21BCF9A876BD0C053A8F3108BF1185F0.pdf>

8. Early Help Assessment

8.1 *St. Elizabeth's* is committed to supporting families as soon as a possible problem arises. It is more effective to support a family through early help than reacting to a problem later. Everyone who comes into contact with children and their families and carers have a role to play in safeguarding children. *St. Elizabeth's* is committed to working closely with its neighbouring family hub to work with families in the community to improve outcomes for children.

The local family hub that the school works closely with is: Families For All, Foleshill Road, Coventry CV6 5LB Tel: 02476977991

8.2 Any child may benefit from early help, but as guided by KCSIE (2024) all school and college staff will be particularly alert to the potential need for early help for a child who:

- is disabled or has certain health conditions and has specific additional needs
- has special educational needs (whether or not they have a statutory Education, Health and Care plan)
- has a mental health need
- is a young carer
- is showing signs of being drawn in to anti-social or criminal behaviour, including gang involvement and association with organised crime groups or county lines
- is frequently missing/goes missing from education, home or care
- has experienced multiple suspensions, is at risk of being permanently excluded from schools, colleges and in Alternative Provision or a Pupil Referral Unit.
- is at risk of modern slavery, trafficking, sexual and/or criminal exploitation

- is at risk of being radicalised or exploited
- has a parent or carer in custody, or is affected by parental offending

- is in a family circumstance presenting challenges for the child, such as drug and alcohol misuse, adult mental health issues and domestic abuse

8.3 *St. Elizabeth's* works within the Coventry Safeguarding Children Partnership's ['Right Help, Right Time'](#) framework, available on the CSCP website.

9. Staff training

9.1 In order for staff to be able to understand and discharge their safeguarding and child protection duties, *St. Elizabeth's* has committed to training staff throughout the academic year. All staff members will be made aware of *St. Elizabeth's* safeguarding processes and structures and will receive training on these as part of their induction. As part of this training and their annual refresher, they will also receive;

- This 'Safeguarding and Child Protection Policy';
- The staff Code of Conduct
- Copies of Part 1 and/or Annex A of Keeping Children Safe in Education (September 2024)
- School procedures for Children Absent from Education
- *St. Elizabeth's* Behaviour Policy

9.2 Staff at *St. Elizabeth's* will; receive continuing CPD in mental health, online safety, domestic violence and abuse, safeguarding e bulletins, DSL refresher training, DSL briefings, Safeguarding hub training. Governors will receive safeguarding training via the Holy Cross MAC. Volunteers will receive the training at their induction prior to working with any children.

9.3 *St. Elizabeth's* recognise that children may engage in risky behaviours that may put them at additional risk of danger. These can include drug taking, alcohol abuse, truancing and the sharing of consensual or non-consensual nude images or videos. Staff will also be trained in these areas in order to be able to further recognise if a child is at risk of harm.

9.4 All staff are aware that children may not feel ready or know how to tell someone that they are being abused, exploited, or neglected, and/or they may not recognise their experiences as harmful. For example, children may feel embarrassed, humiliated, or being threatened. This could be due to their vulnerability, disability and/or sexual orientation or language barriers. This should not prevent staff from having a professional curiosity and speaking to the DSL if they have concerns about a child. It is also important that staff determine how best to build trusted relationships with children and young people which facilitate communication.

10. Safer Recruitment

10.1 *St. Elizabeth's* is committed to providing children with a safe environment, in which they can learn. We take safer recruitment seriously and all staff are subject to the following checks;

- Identity check;
- DBS clearance;
- Prohibition from teaching checks (where required);
- Barred List check;
- Section 128 checks (as required - leadership and management);

- Reference check (two references required);
- Professional qualifications check ;
- Right to work in the UK check;
- Further checks for those who have lived outside the UK;
- Disqualification Under the Childcare Act 2006 checks (as required); and
- Verification of the candidate’s mental and physical fitness may also be sought.

10.2 A record of all checks completed for members of staff will be recorded on the Single Central Record.

10.3 All new members of staff will be required to obtain DBS clearance. *St. Elizabeth’s* reserves the right to re-check DBS clearance for any member of staff where information is received that indicates they may pose a risk to children and may request candidates to register on the DBS update service.

10.4 At least one member of every interview panel will have undertaken Safer Recruitment training which it is recommended is refreshed every 2 years.

10.5 We take proportionate decisions on whether to check individuals above and beyond what is legally required dependant on individual circumstance.

10.6 Any visitor to *St. Elizabeth’s* who has not been subject to the necessary checks will be supervised at all times and a risk assessment completed.

10.7 All safer recruitment practices at *St. Elizabeth’s* comply with Keeping Children Safe in Education (**September 2024**). See Part 3 of Keeping Children Safe in Education (**September 2024**) for further information.

<https://www.hccmac.co.uk/site/data/files/documents/policies/hr/406BC2B5535C77DC5A8167B936714FEE.pdf>

11. Allegations of abuse against staff

11.1 *St. Elizabeth’s* takes all safeguarding matters including low level concerns and/or allegations that harm to a child has occurred against staff (including agency, volunteers and contractors) seriously and will manage them in line with this policy, Part Four of Keeping Children Safe in Education (September 2024) and the CSCP Guidance, [‘Allegations Against Staff and Volunteers’](#).

11.2 Allegations or concerns may include

- Staff having behaved in a way that has harmed a child, or may have harmed a child;
- Staff possibly committing a criminal offence against or related to a child;
- Staff behaving towards a child or children in a way that indicates that he or she may pose a risk of harm to children; or
- Staff behaving or possibly behaving in a way that indicates they may not be suitable to work with children (including behaviour outside of work). This is known as ‘Transferable risk’.

11.3 If a concern or allegation of abuse arises against the Headteacher, or should there be a conflict of interest to the Headteacher, it must be immediately reported to the Chair of Governors and Catholic Senior Executive Leader (CSEL).

11.4 If a concern or allegation of abuse arises against any member of staff, supply teacher, volunteer or contractor other than the Headteacher, it must be reported to the Headteacher without delay (who will report it to the Catholic Senior Executive Leader)

11.5 Concerns or allegations of abuse against staff must be reported to the Headteacher or Chair of Governors as appropriate and not discussed directly with the person involved.

11.6 If a concern or allegation of abuse arises against a member of the Local Governing Body, Board of Directors or MAC Central Team, it must be immediately reported to the Catholic Senior Executive Leader (**Marina Kelly**).

11.7 If a concern or allegation of abuse arises against the Catholic Senior Executive Leader or Chair of the Board of Directors, it must be **immediately** reported directly to the LADO

11.8 The Headteacher or Chair of Governors should consider if the concern or allegation meets the harms threshold as outlined in Working Together to Safeguard Children (2023) guidance indicating that a person in a Position of Trust has:

- behaved in a way that has harmed a child, or may have harmed a child
- possibly committed a criminal offence against or related to a child
- behaved towards a child or children in a way that indicates they may pose a risk of harm to children
- behaved or may have behaved in a way that indicates they may not be suitable to work with children

11.9 If they feel the criteria is met then they should refer in to Coventry LADO using the online referral form on:

https://myaccount.coventry.gov.uk/service/Allegations_against_people_who_work_in_positions_of_trust_with_children_referral

The Headteacher or Chair of Governors can also seek guidance/advice if unsure by emailing lado@coventry.gov.uk.

11.10 'Low-level' concern does not mean it is not significant. This is a term used for any concern (no matter how small) that an adult working with a child may have breached the staff Code of Conduct and does not meet the harm threshold. Examples of which may include:

- Being overly friendly with children
- Having favourites
- Taking photographs of children on their mobile phone
- Engaging with a child on a one-to-one basis in a secluded area or behind a closed door.
Or;
- Humiliating pupils.

The details of the LADO can be found at the front of this policy.

11.11 Concerns relating to a position of trust issue will be referred to the Local Authority designated officer within 24 hours. In accordance with *Keeping Children Safe in Education 2024*, St. Elizabeth's will make every effort to maintain confidentiality and guard against unwanted publicity while an allegation is being investigated or considered.

11.12 If a child has suffered or may have suffered abuse or harm, a MASH referral will also be made.

11.13 In the instances where an allegation is dealt with internally, the Local Authority designated officer will provide information and support to *St. Elizabeth's* in managing the allegation.

11.14 A referral to the Disclosure and Barring Service will be made if a member of staff is dismissed or removed from their post as a result of safeguarding concerns, irrespective of whether they have resigned.

11.15 Supply Teachers and all contracted staff

11.15.1 Although St. Elizabeth's does not directly employ supply teachers and contractors, St. Elizabeth's will ensure that any concerns or allegations are referred to LADO and the relevant agency informed as the employer.

11.15.2 St. Elizabeth's will never cease to use a supply teacher for safeguarding reasons without liaising with the Local Authority Designated Officer and reaching an agreed outcome.

11.15.3 Governing bodies/proprietors will liaise with the supply agency to determine whether to suspend or redeploy the supply teacher whilst they carry out their investigation.

11.15.4 St. Elizabeth's will inform supply agencies of its process for managing allegations, including inviting the agency's human resource manager (or equivalent) to meetings and regularly updating agencies on relevant school policies. St. Elizabeth's will usually take the lead because agencies do not have direct contact with children or staff, so will not be able to gather information.

11.16. Governors

11.16.1 If an allegation or concern is about a Governor, St. Elizabeth's/college will follow local procedures.

11.17. Volunteers

11.17.1 Risk assessments and a DBS check will be requested for all volunteers. Under no circumstances will a volunteer prior to satisfactory checks being completed be alone with children unsupervised or allowed to work in regulated activity.

11.18. Whistleblowing

11.18.1 *St. Elizabeth's* operates a culture of safeguarding and all staff should report any concerns about poor or unsafe practice, or *St. Elizabeth's* safeguarding processes to the senior leadership team.

11.18.2 Appropriate whistleblowing procedures are in place whereby the senior leadership team will take all concerns seriously.

11.18.3 In the event that a member of staff is unable to raise an issue with senior leadership in school, they should refer to Part 1 of Keeping Children Safe in Education for additional guidance on whistleblowing procedures.

11.19. Complaints Procedure

11.19.1 As part of the Holy Cross MAC, *St. Elizabeth's* operates within their complaints policy the procedure outlined in this policy will be followed where a pupil or parent raises a concern about poor practice towards a pupil that initially does not reach the threshold for child protection action. Poor practice examples include unfairly singling out a pupil or attempting to humiliate them, bullying or belittling a pupil or discriminating against them in some way. Complaints are managed by the headteacher, other members of the senior leadership team and governors and the Catholic Senior Executive Leader.

<https://www.hccmac.co.uk/site/data/files/documents/policies/other/BA8419F6CDBF7B9EF24C79E804101A93.pdf>

11.19.2 Complaints from staff are dealt with under *St. Elizabeth's* complaints and disciplinary and grievance procedures. (Also refer to Low level concerns)

11.19.3 Complaints which escalate into a child protection concern will automatically be managed under *St. Elizabeth's* child protection procedures.

12. Promoting safeguarding and welfare in the curriculum

12.1 *St. Elizabeth's* recognises the importance of teaching children how to stay safe and look after their mental health and are committed to equipping children with the skills and knowledge to have successful and happy lives.

12.2 *St. Elizabeth's* will teach children about safeguarding, including online safety through the PSHE curriculum via such concepts as protective behaviours, children identifying their safe network, learning about their personal space and the right to say no. They will learn about online safety and what this entails.

12.3 Schools and colleges play a crucial role in preventative education. Preventative education is most effective in the context of a whole-school or college approach that prepares pupils and students for life in modern Britain and creates a culture of zero tolerance for sexism, misogyny/misandry, homophobia, biphobic and sexual violence/harassment. *St. Elizabeth's* will have a clear set of values and standards, upheld and demonstrated throughout all aspects of school/college life. These will be underpinned by *St. Elizabeth's* behaviour policy and pastoral support system, as well as by a planned programme of evidence based RSHE delivered in regularly timetabled lessons and reinforced throughout the whole curriculum (RSHE). The Catholic Ethos of the school recognises that we are all equal in the eyes of God as and such, this

message is re-inforced throughout the PSHE and RSHE curriculum and through the any gatherings, such as assemblies and pastoral activities. At St. Elizabeth's we believe that children should be taught to respect and value others no matter what differences they may have and this forms the basis of the whole school culture.

12.4 Children at *St. Elizabeth's* will receive the following as part of our promotion of safeguarding across the curriculum: PSHE lessons, RSHE lessons, On-line safety lessons, assemblies, talks from outside agencies such as NSPCC, workshops, educational visits, focus days e.g. internet safety day, parental involvement in the curriculum.

12.5 Education at home and remote education

On occasion children may need to be educated at home, if this is the case they will be offered a blended package of on-line learning via prepared lessons provided by trusted organisations such as White Rose and Oak National Academy and work set by the class teacher. This will combined with twice weekly visits to school if possible or home visits carried out by the DSL if not. The arrangements for safeguarding will still fall under this policy and Keeping Children Safe in Education and Working Together to Safeguard Children.

13. Children Looked After

13.1 The most common reason for children to be looked-after is because they have experienced abuse and/or neglect. *St. Elizabeth's* recognises that children looked after may have additional vulnerabilities by virtue of this. The Designated Lead for Looked-After and Previously Looked-After Children is Julie Miles.

13.2 Staff will receive training on how to best safeguard children who are Looked-After and **who have been** Previously Looked-After.

13.3 *St. Elizabeth's* will work with Personal Advisors when children leave care (where applicable).

13.4 *St. Elizabeth's* is committed to working with other agencies to ensure the best outcomes for Looked-After and Previously Looked-After children.

14. Children with Special Educational Needs and Disabilities (SEND) or physical health needs

14.1 As outlined in Keeping Children Safe in Education (2023), *St. Elizabeth's* is aware that children with additional needs or disabilities may be more vulnerable to abuse both online and offline and additional barriers may exist when recognising abuse and neglect. This could be because;

- assumptions that indicators of possible abuse such as behaviour, mood and injury relate to the child's disability without further exploration;
- being more prone to peer group isolation or bullying (including prejudice-based bullying) than other children;
- the potential for children with SEN and disabilities or certain medical conditions being disproportionately impacted by behaviours such as bullying, without outwardly showing any signs; and
- communication barriers and difficulties in overcoming these barriers.

- Being unable to understand the difference between fact and fiction in online content

14.2 Any reports of abuse involving children with SEND will therefore require close liaison with the designated safeguarding lead and SENCO. Staff will also be trained in recognising signs of abuse in children with SEN and disabilities or certain medical conditions.

14.3 Staff will take into account the needs of a child when responding to concerns of abuse or when taking a disclosure. We recognise that some children require specialist intervention to communicate and advice from the SENCO will be sought in these circumstances.

14.4 Safeguarding learning opportunities within the curriculum will be appropriately differentiated to ensure all children can access it.

15. Use of reasonable force

15.1 There may be occasions when staff are required to use reasonable force to safeguard children. We will not use any more force than is proportionate and necessary.

All staff attended Safer Handling training in May 2024 where the main focus was learning about de-escalation techniques and how to avoid handling a child. Staff will only do this if a child is becoming a danger to themselves or others and there is no other alternative. If a child has significant additional needs and requires more handling than an individual risk assessment will be put in place.

16. Work Experience/ Alternative Provision

16.1 St. Elizabeth's will continue to be responsible for the safeguarding of Students placed with an alternative provision provider and will be satisfied that this provider meets the needs of the pupil. Written confirmation from the provider that appropriate safeguarding checks have been carried out will be sought on individuals working at the establishment, i.e. those checks that St. Elizabeth's would otherwise perform in respect of its own staff.

16.2 The DSL will continue to have oversight of all pupils accessing any part of their learning from an alternative provider or delivery online or offsite provided by any organisation or individual not employed by St. Elizabeth's. The DSL will ensure that robust arrangements are in place for timely and effective information sharing of safeguarding information between St. Elizabeth's and alternative/external providers.

16.3 The DSL will also take responsibility for ensuring that robust procedures are in place to confirm attendance and to enable the swift reporting of non-attendance and children going missing from alternative/ external providers at any time when they should be with that provider.

17. Children staying with host families (see Annex D KCSIE)

18. Boarding schools and residential settings

19. Summary

19.1 St. Elizabeth's is committed to safeguarding children and will always make safeguarding decisions that are in the best interests of each child. For further information or if you have any queries about this policy, please contact St. Elizabeth's.

Appendix A

St. Elizabeth's safeguarding policy is intended to be used in conjunction with the following policies;

St. Elizabeth's adheres to Coventry Safeguarding Children Partnership Policies, which can be found here:

- [Allegations Against Staff or Volunteers \(CSCP\)](#)
- [MAC Anti-Bullying-Policy APPROVED](#)
- [MAC Anti-Discrimination and Harassment Policy](#)
- [MAC Model Attendance Policy](#)
- [School attendance policy](#)
- MAC [Behaviour Principles](#) Statement
- [School Behaviour Policy](#)
- Children/Young people with Medical Needs
- Children Missing in Education Procedures
- MAC [Complaints Policy](#) (BDES Policy adopted by MAC)
- MAC Critical Incident Plan - [MAC Business Continuity Plan](#)
- MAC [Data Protection Policy and Privacy Notice](#)
- [MAC Information Security Policy](#)
- Drugs and Alcohol Policy – [MAC Staff Code of Conduct](#)
- MAC Equalities Policy - [MAC Equalities Statement](#)
- [Managing Professional Disagreements \(CSCP\)](#)
- MAC [Health & Safety Policy](#)
- HR & Governance Policy
- MAC [Prevent Policy](#)
- MAC [Online Safety Policy](#)
- Intimate Care Policy
- [MAC ICT and Internet Acceptable Use Policy](#)
- [MAC Lone Working Policy](#)
- [MAC Home Visits](#) Policy
- Medicine & First Aid Policy
- Primary-Secondary Transition Policy
- PSHE Policy
- [MAC RSHE Policy](#))
- MAC [Safer Recruitment Policy](#)
- Site Security Policy
- MAC [SEND Policy](#)
- MAC [Staff Code of Conduct](#)
- MAC [Trips and Visits Policy](#)
- Use of Reasonable Force Policy

- [MAC External Speaker Policy](#)
- [MAC Code of Conduct Parents, Carers and Visitors](#))
- MAC [Whistleblowing Policy](#) (BDES Policy adopted by MAC)

Appendix B – Further Safeguarding Information

Types of Abuse

As outlined in paragraph 4.4, St. Elizabeth's will take action if we believe a child is at risk of or is suffering from abuse. Abuse is not limited to physical, emotional, sexual abuse and neglect. For further information on the definitions of the types of abuse below, please refer to Keeping Children Safe in Education (2024), Annex A.

See below for policy information relating to other key safeguarding issues. All decisions taken in responding to concerns of abuse will be taken in the best interests of the child.

Bullying, including cyber- or online-bullying

St. Elizabeth's takes all forms of bullying seriously and will respond sensitively and quickly to any reported bullying. Children should report any bullying to their form tutor, to the DSL or to any trusted member of staff and we will work to resolve it.

We also teach children about the dangers of bullying through our curriculum. See link to curriculum here:

Bullying can take many forms and we have several policies that cover different aspects of bullying. Please see the Anti-Bullying Policy, the Behaviour Policy and paragraph 5.8 of this policy for further information. Child criminal exploitation (including involvement in county lines)

St. Elizabeth's is aware of the dangers that children are susceptible to from criminal influences. Staff are trained to be aware of the signs of grooming, they are also aware that vulnerable children can be at particular risk. Children are also educated in this area. Any suspected cases of such exploitation will need to be immediately reported to the school safeguarding lead who will speak to parents and refer to the MASH and police.

Domestic abuse

St. Elizabeth's is aware that domestic abuse is extremely detrimental to children's well-being and is a form of emotional abuse. The school makes clear its stance on how we deal with this in our declaration about Operation Encompass. Reported incidents of domestic violence within the family home will be discussed with the victim and a MASH referral will be made if necessary.

Fabricated or induced illness

St. Elizabeth's understands that children are considered to be at risk if a parent or other adult fabricates or induces an illness in a child. This amounts to emotional and/or physical abuse. Suspected cases should be taken seriously and reported to the safeguarding lead who will make a MASH referral.

Faith-based abuse

St. Elizabeth's takes very seriously any type of faith-based abuse. Staff will be made aware of the issues relating to this so that they know what to look out for. Children or staff should report any such cases to the safeguarding lead who will report to the relevant authorities immediately.

Female genital mutilation (A form of so-called ‘honour-based’ abuse)

St. Elizabeth’s recognises that Female genital mutilation is a type of physical abuse and is illegal in this country. There is no medical or religious reason for FGM and it is viewed as a way of controlling female sexuality. If teachers become aware of any such incidents having occurred or if they suspect that an incident may be due to occur, they have a statutory duty to report this to the police immediately with the support of the safeguarding lead. If a non-teaching member of staff becomes aware of an incident, they should report to the safeguarding lead who will report to the police and any other relevant authorities, including the MASH, immediately.

Forced marriage (A form of so-called ‘honour-based abuse)

St. Elizabeth’s recognises that forced marriage is illegal and will take seriously any allegations that forced marriage is being sought. Any such suspected incidents should be reported to the safeguarding lead who will be report the incident to the police and make a MASH referral.

Gangs or youth violence

St. Elizabeth’s takes very seriously children becoming involved in gang-based violence and will take all necessary steps to counter this issue. Staff will be made aware of any such signs that this is taking place and will report to the safeguarding lead if they believe that a child is at risk. The safeguarding lead will report to the police and make a MASH referral if required.

Gender-based violence

St. Elizabeth’s takes seriously any incidents of gender-based violence. Any such incidents should be reported immediately to the safeguarding lead who will report to the police and a MASH referral will be made as necessary. Parents will be notified, victims will be supported by the school and perpetrators will be dealt with in accordance with the behaviour policy.

Hate

Hate and Hate crime are viewed seriously by St. Elizabeth’s and will not be tolerated by the school. Any such incidents should be reported to the safeguarding lead who will ensure that the correct procedures are put in place depending on the seriousness of the situation. It is paramount that children are educated about this type of behaviour and a meeting will be sought with parents to address the issue. Perpetrators will be dealt with according to the school behaviour policy.

Homelessness

Homelessness is recognised as extremely detrimental to children’s well-being and will involve major upheaval in their lives. Even though they may have a roof over their head, they will be separated from their familiar surroundings and belongings and the stress on families is well documented. Staff should report any incidences of homelessness to the safeguarding lead who will ensure that family support is provided as necessary from either school or other agencies.

(So-called) ‘Honour-based’ abuse (For FGM and Forced Marriage, types of so-called ‘honour-based’ abuse, see above)

So-called “honour based” violence is illegal and viewed very seriously by St. Elizabeth’s. If staff become aware that any families are involved in this, they should report this to the safeguarding

lead immediately. There will be a referral to MASH and the police to ensure the safety of all involved.

Radicalisation and Extremism – <https://www.st-elizabeths.coventry.sch.uk/wp-content/uploads/2017/11/Tackling-Extremism-Radicalisation-Policy.pdf>

The school takes its Prevent duty extremely seriously (see policy above). Any incidents that are found to have occurred should be reported to the safeguarding lead who will make a referral to the Channel team.

Relationship abuse

St. Elizabeth's recognises that relationship abuse is unacceptable in any context and will work to tackle any reported incidents. Staff will provide family support for victims in order to report the abuse to the MASH and police as required.

Serious Violence

St. Elizabeth's recognises that serious violence is illegal and contrary to the Catholic Ethos of our school, it can have devastating effects on the lives of children. We will not tolerate any such incidents and as such we will report to the police and social care any incidents that we become aware of whether they be recent or historical.

Sexual violence or sexual harassment (including peer-on-peer abuse)

Sexual violence and/or sexual harassment is illegal and will not be tolerated at St. Elizabeth's. Children are taught to respect one another and that they should not touch anyone inappropriately. Incidents should be reported to the safeguarding lead who will alert the head teacher and parents of those involved. If appropriate a referral to the MASH and police will be made. Perpetrators will be sanctioned as necessary.

Sharing of consensual or non-consensual nude images and videos

St. Elizabeth's school believes that it is wholly unacceptable for children of primary school age to send or receive sexual messages (images are illegal under the age of 16.) Children are taught about online safety throughout the curriculum and receive specific sessions delivered by outside agencies such as the NSPCC. Any incidents or disclosures should be reported to the safeguarding lead immediately (do not delete the message or image) who will alert the head teacher and parents of those involved. Other agencies such as the police or the MASH will be notified as necessary. Perpetrators will be disciplined as necessary. The school will report online imagery to get it removed.

Trafficking and modern slavery

Trafficking and slavery are illegal and St. Elizabeth's school takes very seriously its duty to uncover any such situations that are on-going. If staff suspect that anything of this nature is occurring within our school community then they should report this immediately to the safeguarding lead who will alert the head teacher and make the appropriate referrals to the police and the MASH.

(So-called) 'Honour-based' abuse (For FGM and Forced Marriage, types of so-called 'honour-based' abuse, see above)

Children absent from education, home or care

St. Elizabeth's will also take action to protect;

- Children **absent from** education
- Children missing from home or care

Children Absent from Education

https://assets.publishing.service.gov.uk/media/66bf57a4dcb0757928e5bd39/Children_missing_education_guidance_-_August_2024.pdf

For children absent from education, the effects can be serious and wide ranging and could mean that the child is at risk. As a school, St Elizabeth's will make every effort to contact parents to ascertain the whereabouts of the child through our routine attendance procedures. Children absent from education for more than 10 days will be officially registered as missing and reported to the local authority's CME team who will continue to investigate their whereabouts. The school will also work closely with the police and/or the local authority to trace any missing children and provide any relevant information that will enable them to return to education.

Children Missing from home or care

https://assets.publishing.service.gov.uk/government/uploads/system/uploads/attachment_data/file/307867/Statutory_Guidance_-_Missing_from_care_3_.pdf

Children who are missing from home or care are at serious risk of coming to harm so if this comes to our attention, we would have a statutory duty to report to all relevant authorities including the police and the MASH. We will support the parents and family but if going home proves to be a serious risk we will work with other agencies to find the best possible solution to ensure the child's safety.

Private Fostering

St. Elizabeth's have a duty to refer any children who are living in a private fostering arrangement to the local authority.

We will do this through a MASH referral. It is important that parents/carers inform us if a child is going to be staying at an alternative address to that of their primary care-givers for more than 28 days.

Indicators of abuse

See below for possible indicators of abuse. (Taken from *What to do if you are worried a child is being abused*, 2015)

- Children whose behaviour changes – they may become aggressive, challenging,
- disruptive, withdrawn or clingy, or they might have difficulty sleeping or start
- wetting the bed;
- Children with clothes which are ill-fitting and/or dirty;
- Children with consistently poor hygiene;

- Children who make strong efforts to avoid specific family members or friends, without an obvious reason;
- Children who don't want to change clothes in front of others or participate in physical activities;
- Children who are having problems at school, for example, a sudden lack of concentration and learning or they appear to be tired and hungry;
- Children who talk about being left home alone, with inappropriate carers or with strangers;
- Children who reach developmental milestones, such as learning to speak or walk, late, with no medical reason;
- Children who are regularly missing from school or education;
- Children who are reluctant to go home after school;
- Children with poor school attendance and punctuality, or who are consistently late being picked up;
- Parents who are dismissive and non-responsive to practitioners' concerns;
- Parents who collect their children from school when drunk, or under the influence of drugs;
- Children who drink alcohol regularly from an early age;
- Children who are concerned for younger siblings without explaining why;
- Children who talk about running away; and
- Children who shy away from being touched or flinch at sudden movements.

St. Elizabeth's recognises that the above list of indicators is not exhaustive, and staff will receive training on indicators of abuse.